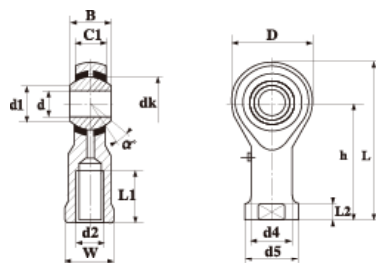


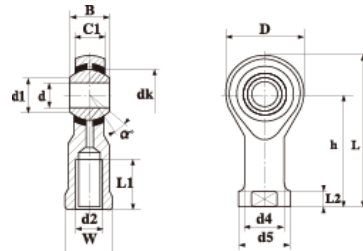
PHS形(めねじ付き)



呼び番号 Type No.	d	D(max)	L(max)	主要寸法 (mm)		Dimensions		W	L1(min)	h	L2(max)	主要寸法 (mm)		Dimensions		負荷容量 (kN)		重量 (kg) Weight
				B	d2	C1(max)	d4(max)					d5(max)	dk	d1	α°	動 C	静 Co	
PHS 5	5	16	35	8	M5×0.8	6.00	9	10	27	4.0	8.50	11	11.110	7.7	13	3.25	5.70	0.016
PHS 6	6	18	39	9	M6×1.0	6.75	11	12	30	5.0	10.0	13	12.700	8.96	13	4.30	7.20	0.022
PHS 8	8	22	47	12	M8×1.25	9.00	14	16	36	5.0	12.5	16	15.875	10.4	14	7.20	11.60	0.047
PHS10	10	26	56	14	M10×1.5	10.5	17	20	43	6.5	15.0	19	19.050	12.9	13	10.00	14.50	0.077
PHS12	12	30	65	16	M12×1.75	12.0	19	22	50	6.5	17.5	22	22.225	15.4	13	13.40	17.00	0.100
PHS14	14	34	74	19	M14×2.0	13.5	22	25	57	8.0	20.0	25	25.400	16.9	16	17.00	24.00	0.160
PHS16	16	40	84	21	M16×2.0	15.0	24	28	64	8.0	22.0	27	28.575	19.4	15	21.60	28.50	0.220
PHS18	18	44	93	23	M18×1.5	16.5	27	32	71	10	25.0	31	31.750	21.9	15	26.00	42.50	0.320
PHS20	20	50	102	25	M20×1.5	18.0	30	33	77	10	27.5	34	34.925	24.4	14	31.50	42.50	0.420
PHS22	22	54	111	28	M22×1.5	20.0	32	37	84	12	30.0	38	38.100	25.8	15	38.00	57.00	0.540
PHS25	25	60	124	31	M24×2.0	22.0	36	42	94	12	33.5	42	42.850	29.6	15	47.50	68.00	0.730
PHS28	28	66	136	35	M27×2.0	24.0	41	48	103	14	37.0	46	47.600	32.3	15	58.00	75.00	0.980
PHS30	30	70	145	37	M30×2.0	25.0	41	51	110	15	40.0	50	50.800	34.8	17	64.00	88.00	1.100

※左ネジの場合は、呼び番号末尾にLを付記します。(例：PHS 8 L)

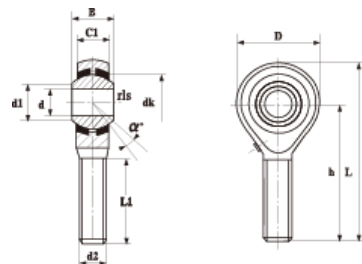
PHST形(めねじ付き)無給油式



呼び番号 Type No.	d	D(max)	L(max)	主要寸法 (mm)			Dimensions			主要寸法 (mm)			Dimensions			負荷容量 (kN)		重量 (kg) Weight
				B	d2	C1(max)	W	L1(min)	h	L2(max)	d4(max)	d5(max)	dk	d1	α°	動 C	静 Co	
PHST 5	5	18	36	8	M5×0.8	6.00	9	10	27	4.0	8.50	11	11.110	7.7	13	5.70	6.00	0.016
PHST 6	6	20	40	9	M6×1.0	6.75	11	12	30	5.0	10.0	13	12.700	9.0	13	7.20	7.65	0.022
PHST 8	8	24	48	12	M8×1.25	9.00	14	16	36	5.0	12.5	16	15.875	10.4	14	11.60	12.90	0.047
PHST10	10	28	57	14	M10×1.5	10.5	17	20	43	6.5	15.0	19	19.050	12.9	13	14.50	18.00	0.077
PHST12	12	32	66	16	M12×1.75	12.0	19	22	50	6.5	17.5	22	22.225	15.4	13	17.00	24.00	0.100
PHST14	14	36	75	19	M14×2.0	13.5	22	25	57	8.0	20.0	25	25.400	16.9	16	24.00	31.00	0.160
PHST16	16	42	85	21	M16×2.0	15.0	22	28	64	8.0	22.0	27	28.575	19.4	15	28.50	39.00	0.220
PHST18	18	44	93	23	M18×1.5	16.5	27	32	71	10	25.0	31	31.750	21.9	15	42.50	47.50	0.320
PHST20	20	50	102	25	M20×1.5	18.0	30	33	77	10	27.5	34	34.925	24.4	14	42.50	57.00	0.420
PHST22	22	54	111	28	M22×1.5	20.0	32	37	84	12	30.0	38	38.100	25.8	15	57.00	68.00	0.540
PHST25	25	60	124	31	M24×2.0	22.0	36	42	94	12	33.5	42	42.850	29.6	15	68.00	85.00	0.720
PHST28	28	66	136	35	M27×2.0	24.0	41	51	103	14	37.0	46	47.600	32.3	15	86.00	107.00	0.820
PHST30	30	70	145	37	M30×2.0	25.0	41	51	110	15	40.0	50	50.800	34.8	17	88.00	114.00	1.100

※左ネジの場合は、呼び番号末尾にLを付記します。(例：PHST 8 L)

POS形(おねじ付き)



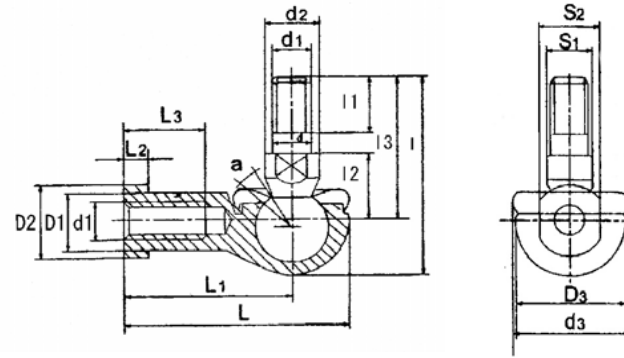
呼び番号 Type No.	d	D(max)	L(max)	主要寸法 (mm)		Dimensions							負荷容量 (kN)		重量 (kg) Weight
				d2	B	C1(max)	L1(min)	h	dk	r 1 s (min)	a°	d1	動 C	静 Co	
POS 5	5	16	41	M5×0.8	8	6.00	20	33	11.110	0.3	13	7.70	3.25	5.70	0.013
POS 6	6	18	45	M6×1.0	9	6.75	22	36	12.700	0.3	13	8.96	4.30	7.20	0.020
POS 8	8	22	53	M8×1.25	12	9.00	25	42	15.875	0.3	14	10.40	7.20	11.6	0.030
POS10	10	26	61	M10×1.5	14	10.5	29	48	19.050	0.3	13	12.90	10.0	14.5	0.055
POS12	12	30	69	M12×1.75	16	12.0	33	54	22.225	0.3	13	15.40	13.4	17.0	0.085
POS14	14	34	77	M14×2.0	19	13.5	36	60	25.400	0.3	16	16.90	17.0	24.0	0.140
POS16	16	40	86	M16×2.0	21	15.0	40	66	28.575	0.3	15	19.40	21.6	28.5	0.210
POS18	18	44	94	M18×1.5	23	16.5	44	72	31.750	0.3	15	21.90	26.0	42.5	0.280
POS20	20	50	103	M20×1.5	25	18.0	47	78	34.925	0.3	14	24.40	31.5	52.5	0.380
POS22	22	54	111	M22×1.5	28	20.0	51	84	38.100	0.3	15	25.80	38.0	57.0	0.480
POS25	25	60	124	M24×2.0	31	22.0	57	94	42.850	0.3	15	29.60	47.5	68.0	0.640
POS28	28	66	136	M27×2.0	35	24.0	62	103	47.600	0.3	15	32.30	58.0	75.5	0.960
POS30	30	70	145	M30×2.0	37	25.0	66	110	50.800	0.3	17	34.80	64.0	88.0	1.100

※左ネジの場合は、呼び番号末尾に L を付記します。(例: POS 8 L)

SQ形
リンクボールBL形相当



SQ

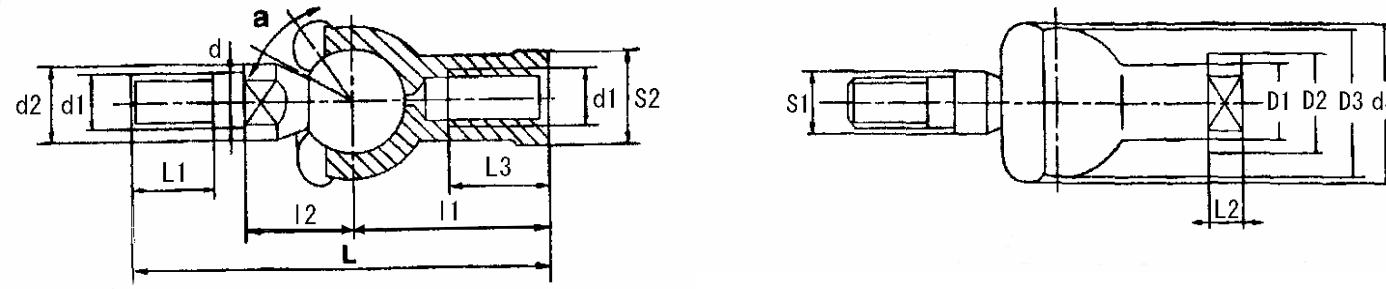


呼び番号	主要寸法(mm) Dimensions																		静負荷容量 (kN)	重量 (kg) Weight
Type No.	d	d3 (max)	L (max)	l	d1	d2 (min)	l1 (min)	l2	l3 (max)	S1	L1	L2 (max)	L3 (min)	D1 (max)	D2 (max)	D3 (max)	S2	a		
SQ5-RS	5	19	35	29.0	M 5 × 0.8	9	8	10.0	21	7	27	4.0	14	9.0	11	16	9	25	2.2	0.026
SQ6-RS	6	20	40	35.5	M 6 × 1	10	11	11.0	26	8	30	5.0	14	10.0	13	19	11	25	3.5	0.039
SQ8-RS	8	24	48	42.5	M 8 × 1.25	12	12	14.0	31	10	36	5.0	17	12.5	16	23	14	25	6.6	0.068
SQ10-RS	10	30	57	50.5	M10 × 1.25	14	15	17.0	37	11	43	6.5	21	15.0	19	27	17	25	10	0.112
SQ10-RS-1	10	30	57	56.5	M10 × 1.5	14	21	17.0	43	11	43	6.5	21	15.0	19	27	17	25	10	0.112
SQ12-RS	12	32	66	57.5	M12 × 1.25	17	17	19.0	42	15	50	6.5	25	17.5	22	31	19	25	16	0.164
SQ12-RS-1	12	32	66	64.5	M12 × 1.75	17	24	19.0	49	15	50	6.5	25	17.5	22	31	19	25	16	0.164
SQ14-RS	14	38	75	73.5	M14 × 1.5	19	22	21.5	56	17	57	8.0	26	20.0	25	35	22	25	19	0.254
SQ14-RS-1	14	38	75	79.5	M14 × 2	19	28	21.5	62	17	57	8.0	26	20.0	25	35	22	25	19	0.254
SQ16-RS	16	44	84	79.5	M16 × 1.5	22	23	23.5	60	19	64	8.0	32	22.0	27	39	22	20	26	0.336
SQ16-RS-1	16	44	84	85.5	M16 × 2	22	29	23.5	66	19	64	8.0	32	22.0	27	39	22	20	26	0.336
SQ18-RS	18	45	93	90.0	M18 × 1.5	23	25	26.5	68	20	71	10	34	25.0	31	44	27	20	33	0.464
SQ20-RS	20	50	99	90.0	M20 × 1.5	27	25	27.0	68	24	77	10	35	27.5	34	44	30	20	45	0.538
SQ22-RS	22	52	109	95.0	M22 × 1.5	27	26	28.0	70	24	84	12	41	30.0	37	50	32	16	48	0.713

SQZ形
リンクボールRBI相当



SQZ



呼び番号 Type No.	主要寸法(mm) Dimensions																静負荷容量 (kN)	重量 (kg) Weight
	d	d3 (max)	d2 (min)	d1	l1	l2	L3 (min)	S1	L (max)	L1 (min)	L2 (max)	D1 (max)	D2 (max)	D3 (max)	S2	a°		
SQZ5-RS	5	20	9	M 5 × 0.8	24	11.0	12	7	46.0	8	4.0	9.0	11	17	9	15	2.8	0.025
SQZ6-RS	6	20	10	M 6 × 1	28	12.2	15	8	55.2	11	5.0	10.0	13	20	11	15	3.7	0.041
SQZ8-RS	8	24	12	M 8 × 1.25	32	16.0	16	10	65.0	12	5.0	12.5	16	24	14	15	5.8	0.075
SQZ10-RS	10	30	14	M10 × 1.25	35	19.5	18	11	74.5	15	6.5	15.0	19	28	17	15	8.4	0.12
SQZ10-RS-1	10	30	14	M10 × 1.5	35	19.5	18	11	80.5	21	6.5	15.0	19	28	17	15	8.4	0.12
SQZ12-RS	12	32	17	M12 × 1.25	40	21.0	20	15	84.0	17	6.5	17.5	22	32	19	15	11	0.18
SQZ12-RS-1	12	32	17	M12 × 1.75	40	21.0	20	15	91.0	24	6.5	17.5	22	32	19	15	11	0.18
SQZ14-RS	14	38	19	M14 × 1.5	45	23.5	25	17	103	22	8.0	20.0	25	36	22	11	15	0.27
SQZ14-RS-1	14	38	19	M14 × 2	45	23.5	25	17	109	28	8.0	20.0	25	36	22	11	15	0.27
SQZ16-RS	16	44	22	M16 × 1.5	50	25.5	27	19	112	23	8.0	22.0	27	40	22	11	15	0.36
SQZ16-RS-1	16	44	22	M16 × 2	50	25.5	27	19	118	29	8.0	22.0	27	40	22	11	15	0.36
SQZ18-RS	18	45	23	M18 × 1.5	58	31.0	32	20	130.5	25	10	25.0	31	45	27	11	19	0.54
SQZ20-RS	20	50	27	M20 × 1.5	63	29.0	38	24	133	25	10	27.5	34	45	30	7.5	19	0.57
SQZ22-RS	22	52	27	M22 × 1.5	70	33.0	43	24	145	26	12	30.0	37	50	32	7.5	23	0.76